

UN-GGIM Kunming Forum

Smart City ---

Dynamic Data Handling for Decision Making

Huayi Wu
 LIESMARS
 Wuhan University
 10 May, 2017




1

Basic Intelligence

Advanced Intelligence

Basic Smartness

Advanced Smartness

- detection - decision - action (an automatic chain)
- detection - decision - action - feedback - improvement (an automatic loop)
- detection - decision - action - feedback - optimization (an automatic spiral)
- awareness-preplan-action(an autonomous chain)
- awareness-preplan-action-feedback-improvement (an autonomous loop)
- awareness-preplan-action-feedback-optimization (an autonomous spiral)
-deep leaning, horizontal learning..... (known problem)
-inheritance, evolution..... (unknown problem)

2

Smart City Data Ecosystem

- ❑ Cities of the future will be integrative data ecosystems
- ❑ Generating and consuming massive amounts of data

- Mr. Greg Scott

3

❑ Multiple Scale

- International, Regional, National, Provincial, Municipal, **Local**

❑ Multiple Dimension

- Geospatial, non-geospatial, quantitative, qualitative, image, video

❑ Multiple Granularity

- Statistical, collective, samples, abstracts, streaming

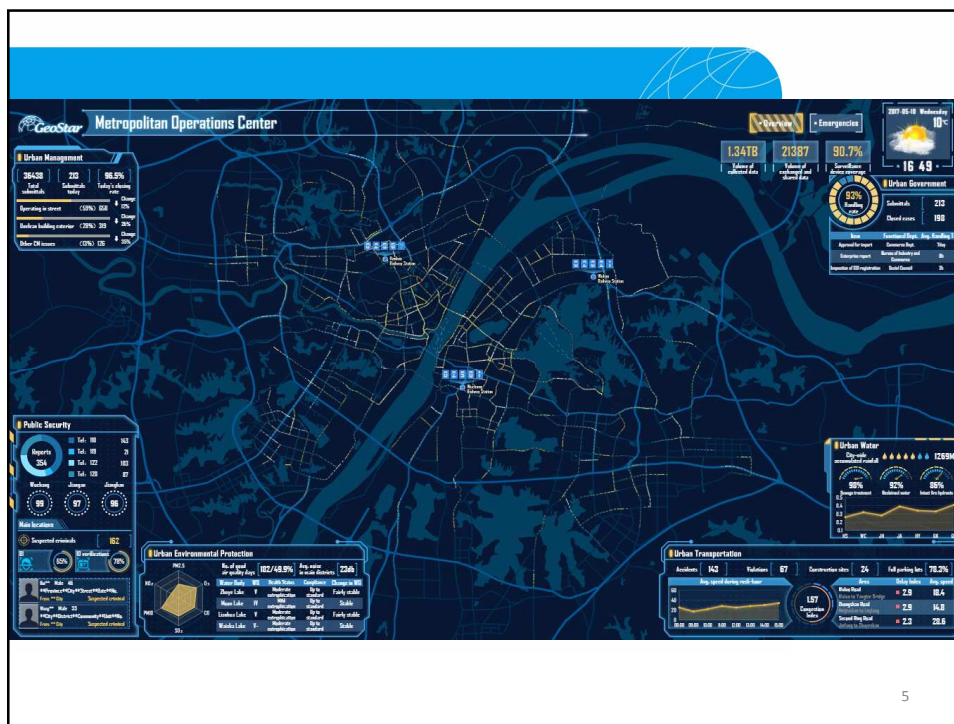
❑ Multiple Sources

- Remote Sensing, Physical Sensors, Social Sensors,

❑ Multiple Temporal

- Static, **Slow-changing, Quick-changing, Real-time**,

4



	Spatial	Non-Spatial
Static	Buildings, Road Network, Fire hydrant, Infrastructures, District Population, Spatial Layouts.....	
Slow-Changing	Schools, Residents, Medical Services, Number of elder/disabled people, economy.....	
Quick-Changing	Temperature, Pedestrian Flow, Police Deployment.....	
Real-time	Fire, Social cases, wind, weather,	

At the bottom right of the table area, the number '6' is displayed.



The image displays two views of the Smart Lintong Smart Operation Center. On the left is a comprehensive dashboard with various data visualizations including maps, charts, and tables. On the right is a control room with several operators seated at desks, monitoring multiple large screens displaying the same dashboard data.

智慧临潼 Smart Lintong

7

Challenges

- **Technological Challenges**
 - Big data management, Data cleaning
 - Real-time data fusion, streaming data processing, Visualization
 - AI, deep learning for effective and efficient decision making
- **Policy Making and Management Challenges**
 - Data policy
 - Data safety
 - Life cycle management of data ecosystem
 -

8

